

PRIMER

Function

Primer is a solvent primer for priming PVC and CPVC plastic pipe and fittings. Tests have shown that greater long-term joint strength is obtained with the use of a primer.

Application

Primer is recommended for pressure applications. Additional applications include potable water, DWV (drain, waste, vent), conduit, irrigation and sewer systems.




1. TECHNICAL DATA

- PRODUCT 911.
- SIZES: 1 quart and 1/4 pint.
- COLOR: purple
- DENSITY: 7.1 lb/gal.
- VISCOSITY: wáter-thin.
- MAX VOC PER SCAQMD 1168/316A: 550 G/L.
- FLASH POINT: 6° F (closed cup).
- SHELF LIFE: 2 year minimum

1.1 REFERENCE ESPECIFICACIONES

- ASTM F 656, SCAQMD 1168/316

LISTINGS:

- NSF (National Sanitation Foundation) 
- U.P. Code (Uniform Plumbing Code)

1.2 COMPLEMENTARY ITEMS

- DWV line
- SDR35 Line
- SCH40 PVC Line

2. BENEFITS

- Resistance: product with high chemical resistance, developed for application of aggressive fluids as acids and bases;
- Easy to install, joints cold welded, without the need of sophisticated tools and equipment;
- Sustainability: Toluene free formula with low emission of solvents, contributing to the environment preservation.

3. INSTALACIÓN

3.1 Instructions for Application:

Separate all materials and equipment necessary to install the system.

Step 1: Cut the pipe with a tool, keeping the end flat;



Step 2: With a file, bevel the pipe end 10-15° and remove sharp edges and cut remains;

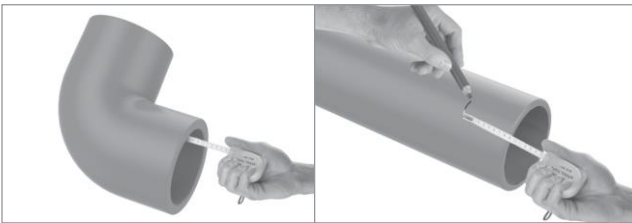


Data Sheet

Step 3: With the tow or clean and dry cloth, clean the pipes end connections bags ends surfaces;



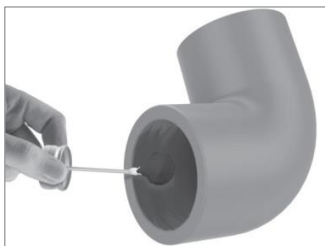
Step 4: With a measuring tape, measure total length of connection bag. Following, mark the same measures on the pipe end;



Step 5: Before starting welding procedure, test to check whether there is reaction between Primer and plastic material. To do so apply Primer on a small piece of pipe that will not be used and scrap the surface while humid with a knife. Primer penetration in the pipe occurs when by scraping the pipe you evidence the presence of Primer even with the removal of the plastic surface layer;

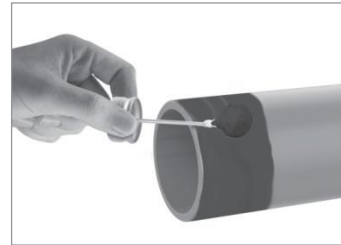


Step 6: Using an appropriate applicator, that corresponds to half the pipe diameter, apply Primer inside the connection bag till the surface is malleable.

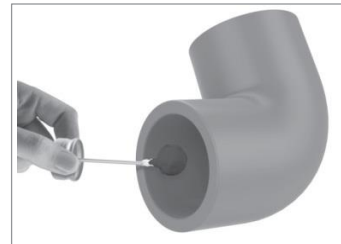


Note: At low temperatures, it may be necessary to apply;

Step 7: Carry out the same procedure to the outside of the pipe end;



Step 8: Apply a second layer of Primer inside the connection bag. Avoid excess use so Primer does not flow inside the connection and the pipe.



3.2 Transportation / Handling

During danger products transportation, the carrier shall:

- Make available driver skilled to this type of transportation (Mopp course);
- Make safety kit, plates with symbology and risk number available;
- Guide drivers to carefully read the safety envelope and the emergency file (both provided by Tigre) before starting the journey so, in case of accidents, they proceed according to their instructions.

IMPORTANT: These rules apply to vehicles that transport load above 333 kilograms of products mentioned in this technical sheet. Information reinforced in case of load manifest.

Personal Protection Equipment:

Breathing protection: mask with filter to protect from organic vapors.

Hands protection: Rubber, Latex / Neoprene

gloves/ or other ones resistant to organic solvents.

Eyes protection: Safety goggles for chemicals.

Skin and body protection: PVC apron, safety footwear and others according to the work conditions.

Special precautions: according to the work conditions.

For facilities with products above 3", we recommend the work is performed by more than one person to speed the welding procedure and make it more efficient

3.3 Package / Storage:

- Primer shall not be used in systems with compressed air or gases.
- Products that contain flammable liquids or vapors; therefore it is recommended to keep them stored between 5°C and 44°C. Keep away from heat, spark, flame or other sources that may generate materials combustion.
- Do not smoke while working with the product.
- When out of use, keep the package closed.
- Use Primer outdoors or in well-ventilate areas, using protection gloves.
- It is not recommended to mix other substances as solvents, to change primer viscosity.

3.4 Maintenance and Care:

- **IN CASE OF CONTACT WITH THE SKIN (or with hair):** Immediately remove all the contaminated clothes and rinse the skin with plenty water for 15 minutes. If irritation persists, seek nearest medical care.
- **IN CASE OF CONTACT WITH THE EYES:** Rinse carefully with water for several minutes.
- **IN CASE OF INHALATION:** Remove the person to a ventilated place and keep him/her at rest in a position he/she can breathe easily.
- **IN CASE OF INGESTION:** Flush the mouth, without inducing vomit and immediately seek medical care.
- **IN CASE OF FIRE:** For extinction, use extinguisher compatible with carbon dioxide (CO₂), foam, water mist and dry chemical powder.

ATTENTION:

Do not use any type of calcium hypochlorite for water purification in drinking water system. Mixture of this material with Primer may result in chemical reaction that impair water use. Besides, we also recommend calcium is not stored nor used near Primer.

4. LINE ITEMS

PRIMER- Purple



CODE	SIZES	Primary quantity	Secondary quantity
37000006	1/4 PINT (4 FL. OZ.) 118mL	1	24
37000007	1 QUART (32 FL. OZ) 946mL	1	12